



# Architect Biographies

## **schmidt hammer lassen architects**

### Company Profile

Schmidt hammer lassen architects is a modern, Danish architectural practice, shaped by the virtues of Scandinavian traditions and orientated towards and working on the international scene.

SHL works at the dynamic intersection of the Nordic traditions and the international scene and seeks to influence international architecture. With its projects winning prizes in national and international competitions coupled with the range of its activities, the practice has evolved since its founding in 1986 to become one of Scandinavia's largest and most respected architectural firms.

Since its inception, the company has won more than 145 international and domestic competitions and is the recipient of 86 awards and citations of excellence.

The practice has extensive experience in the design of libraries and other public and cultural landmark buildings such as the extension to the Royal Library in Copenhagen (1999), ARoS Museum of Art in Aarhus, Denmark (2004), the Urban Media Space Library in Aarhus and the Halmstad Library in Sweden (2006). The University of Aberdeen New Library is a major British project is currently under construction.



**Morten Schmidt**  
Founding Partner  
**schmidt hammer lassen**  
architects

### **Morten Schmidt**

#### Design Director

Danish

#### Professional Bodies and Education

Aarhus School of Architecture, Dept. of Architectural Design, 1976 - 1982

Member Royal Institute of British Architects (RIBA) and ARB

Member American Institute of Architects (AIA)

Member Danish Association of Architectural Firms (Danske Ark)

Member (and former Deputy Chairman) of the Board of Directors of the Architects' Association of Denmark (AA)

Member of the Danish Society of Artists under the Academy Council

Member of the Academy Council's external examination board

Morten Schmidt, together with Bjarne Hammer and John Lassen, is a founding partner of SHL architects. Among other work, Morten Schmidt has specialized in the design of educational and library buildings, working on the Royal Library in Copenhagen and being the partner-in-charge of the City of Westminster College and the University of Aberdeen New Library. As one of the five partners of the firm, Morten is responsible for directing design and ensuring the quality of the projects. His particular remit is the international work of the practice. Over the twenty-year history of the firm, Morten has acted in the capacity of project architect and then project partner, involved at every stage of the design and construction process, including the competition process. In addition to the projects above, his projects include the Aarhus Art Museum ARoS, the largest in Northern Europe, the Katuaq Culture Centre in Nuuk, Greenland and housing developments in Germany, France and Iceland. In recognition of his contribution to architecture, Morten is an invited Member of the Danish Society of Artists under the Academy Council and the Danish Association of Architectural Firms.



**Chris Hardie**  
Senior Architect  
**schmidt hammer lassen**  
**architects**

## **Chris Hardie**

Senior Architect and Leader of Concept Development, London

Born 1977, British

### Education and Qualifications:

Registered Architect/ARB and Member of Royal Institute of British Architects

2007 Professional Practice Part III (Distinction)

2001 DipArch Advanced Architectural Studies (Distinction)

2000 BSc (Hons) Architecture (First Class)

The Scott Sutherland School of Architecture, Robert Gordon University, Aberdeen

The College of Architecture, The Illinois Institute of Technology, Chicago, Illinois

The Faculty of Architecture & Spatial Design, London Metropolitan University, London

### Experience:

Schmidt Hammer Lassen Architects, London, 2008 – present

Haworth Tompkins Architects, Associate, London 2003 - 2008

David Chipperfield Architects, London 2001 - 2003

Wilkinson Eyre Architects, London 1998 - 1999

STL Architects, Chicago, USA 1997-1998

### Teaching:

Visiting Critic, Dalhousie University School of Architecture, Nova Scotia, 2010

Visiting Critic, The Scott Sutherland School of Architecture, Aberdeen, 2003 - present

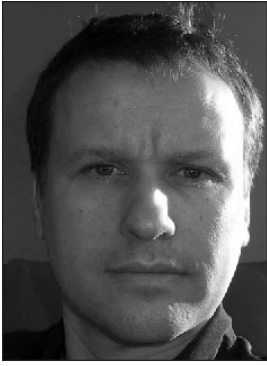
Visiting Critic, Brighton University School of Architecture, Brighton, 2005

Visiting Critic, Sheffield University School of Architecture, Sheffield, 2006

Chris Hardie joined Schmidt Hammer Lassen Architects in 2008 to lead, with the Partners, the design development of projects within the London office. Chris has ten years professional experience and most recently was an Associate at the award winning London practice Haworth Tompkins Architects where he was Project Architect and Associate in charge for the acclaimed Coin Street Neighbourhood Centre on London's South Bank. Other notable projects include the redevelopment of the London Library in St. James Square, and a new retail and residential development as part of the Paradise Street redevelopment in Liverpool. Chris also led the competition winning proposal for the new Battersea campus for the Royal College of Art, a proposal for the new Lausanne Opera House and Bishops Palace House, a new retail and leisure development in Kingston upon Thames.

Prior to this, Chris worked at the London studio of David Chipperfield Architects where he was a key team member on the Des Moines Public Library in Iowa, USA responsible for the facade design and a retail and residential development in Almere, a town outside Amsterdam in the Netherlands. Chris has been involved in and led a number of international competitions at both David Chipperfield Architects and Haworth Tompkins Architects. As an individual in 2005, Chris won the international competition for a new cultural pavilion in Coney Island, New York, and his subsequent thesis entitled "The Pavilion: Symbol of Recreation and Regeneration" was published by Princeton Architectural Press in 2007.

Chris has been involved in and led a number of projects for Schmidt Hammer Lassen, including the International Criminal Court in the Hague, Netherlands, and a new Chemistry Department building for the University of Oxford. Most recently Chris has led, with the partners, the design and public consultation process for the new Halifax Central Library in Nova Scotia, the Highlands Branch Library in Edmonton, Alberta, and a new commercial and residential development in the new city of Tongzhou, on the western outskirts of Beijing.



**Stuart Hill**  
Project Architect  
**schmidt hammer lassen**  
**architects**

**Stuart Hill**  
Project Architect

British

**Professional Bodies and Education**

BA(Hons), Dipl. Arch, RIBA

University of Westminster, Dipl. Arch

University of Westminster School of Architecture BA(Hons)

Member of Royal Institute of British Architects (RIBA) and ARB

Stuart Hill joined SHL architects in early 2006 as Project Architect for the £35 million University of Aberdeen New Library. Through this project, Stuart has built a specialised knowledge in the design of academic libraries.

Stuart has eighteen years of experience in UK architectural practices focussing on educational and cultural projects, including those in sensitive historic contexts. From 1997 to 2005 at John Miller + Partners, Stuart was Project Leader and Project Associate on the National Galleries of Scotland, a project linking the National Gallery of Scotland and the Royal Scottish Academy on Edinburgh's world heritage site; the Playfair Project in Edinburgh, a refurbishment and new build project; and the Centenary Development at Tate Britain which created new galleries and educational facilities within the footprint of the original Tate. While at Julian Harrap Architects, Stuart worked on the extension of the Sir John Soane's Museum to number 14 Lincolns Inn Fields.